

Ria MED Floodlights



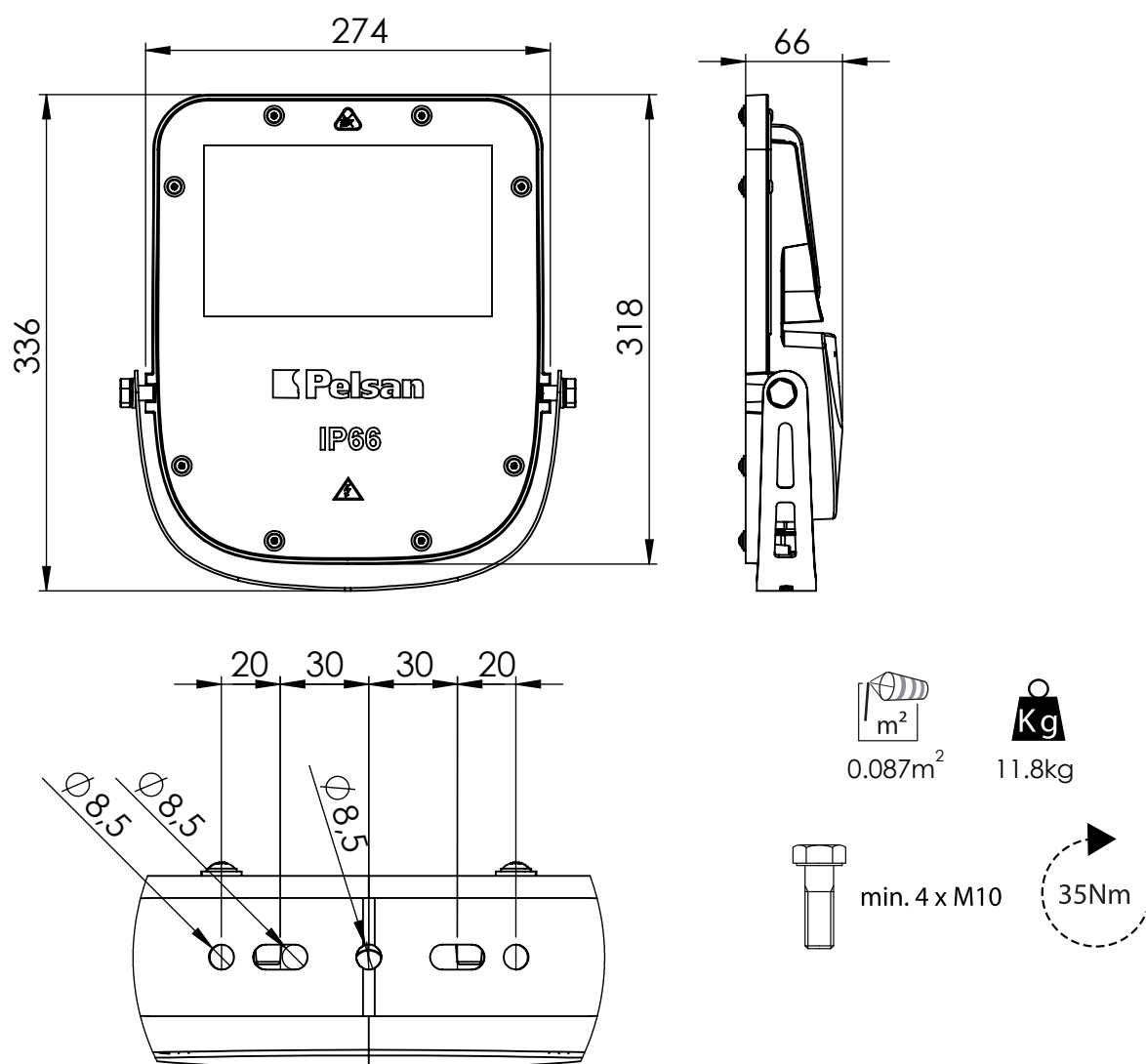
Main Dimensions / Mounting Dimensions

| | |
|--------|--|
| Body | Aluminum |
| LED | Mid Power/Power LED |
| Glass | Transparent tempered glass that meets the conditions of IK09, resistant to heat and impacts. (The maximum temperature that glass can withstand is 250 ° C and is not affected by temperatures below 0 ° C, it can withstand temperature differences up to 200K.) |
| Driver | High Power LED Driver |

| Power | Energy Efficiency Class of Light Source |
|-------|---|
| 40W | C |
| 50W | C |
| 60W | D |
| 80W | D |
| 100W | E |

Ria MED Floodlights

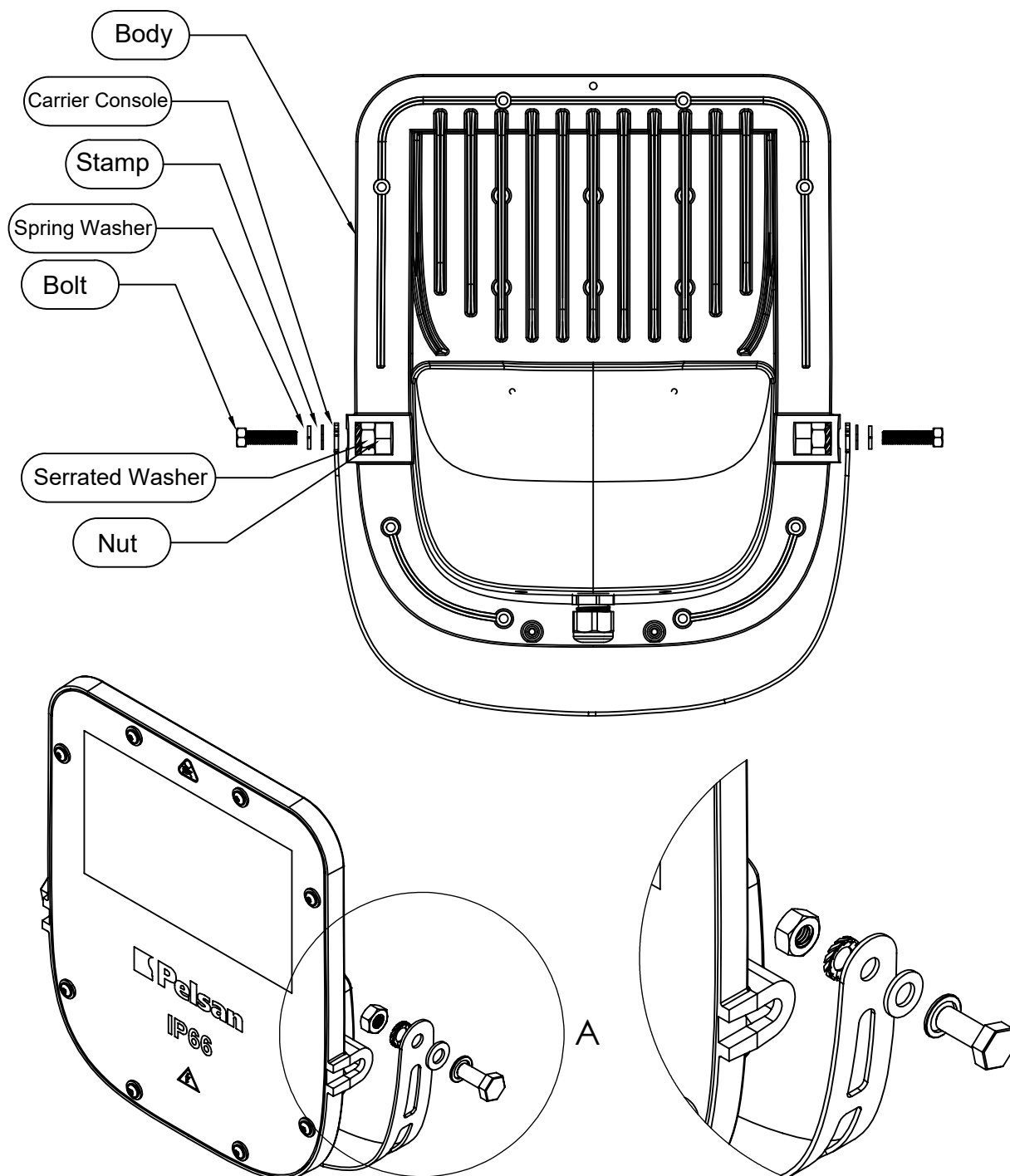
INSTALLATION SPECIFICATIONS



- All dimension are (mm)

Ria MED Floodlights

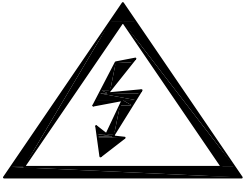
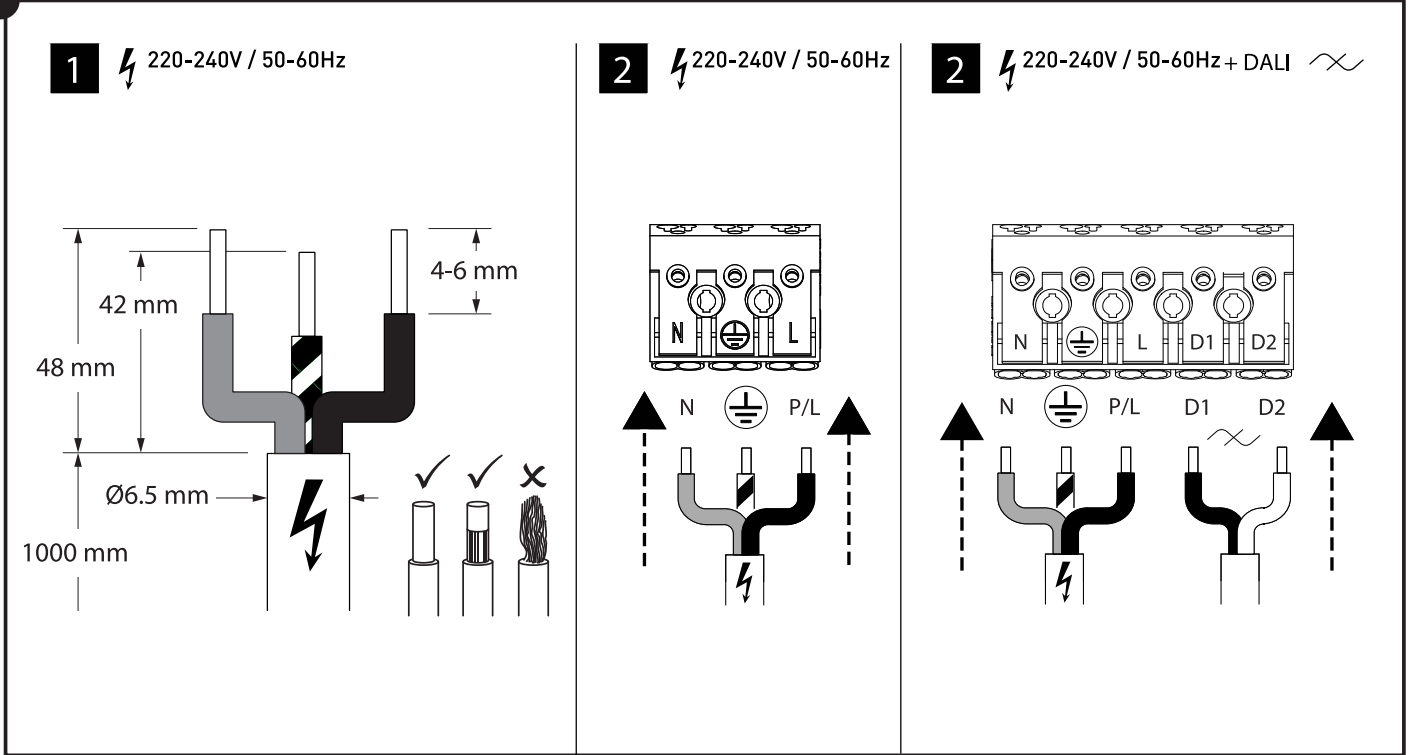
Ria MED Floodlights INSTALLATION SPECIFICATIONS



- Make sure that the fastener specified in the table is in the box.
- Fix the console at the desired angle setting, in the order that is indicated in the image.

Ria MED Floodlights

Electrical Connection



- Maximum installation height 20m
- In special applications, installation height is optional.

Security Warnings

- The luminaire should be installed by an experienced and licensed electrician
- The grid electricity should be turned off before installation and maintenance
- The luminaire should be cleaned with a soapy cloth.
- Thinner or similar flammable, harmful cleaning substances should be avoided
- The product should be operated at a 220-240 V AC / 50-60 Hz grid.
- Check if the connections are tight and correct
- The light source contained in this luminaire shall only be replaced by the manufacturer or his service agent or a similar qualified person.
- If the external flexible cable or cord of this luminaire is damaged, it shall be exclusively replaced by the manufacturer or his service agent or a similar qualified person in order to avoid a hazard.
- Only to be installed outside arms reach.
- The luminaire should be positioned so that no prolonged direct gaze is expected from a distance of less than 5.7 meters.